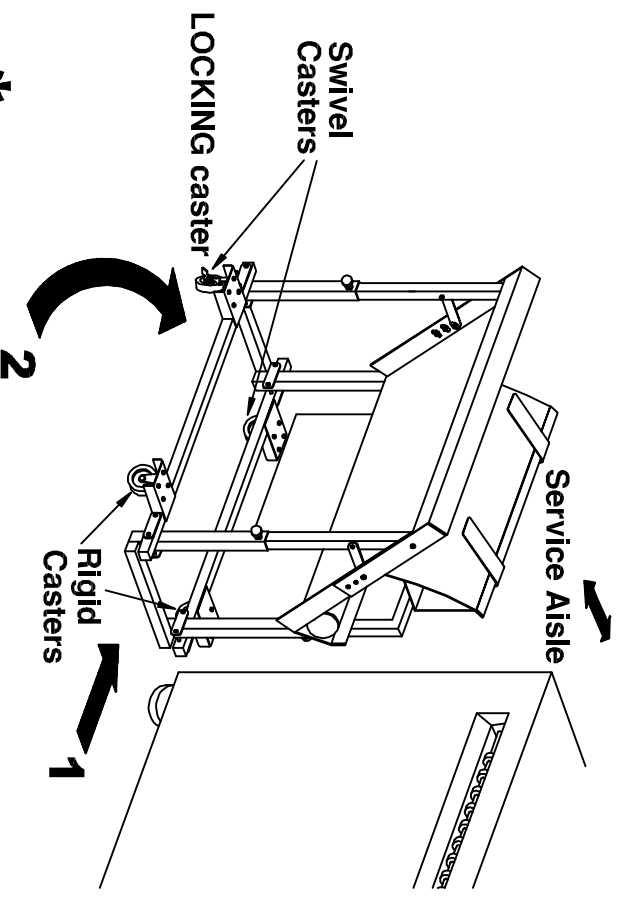
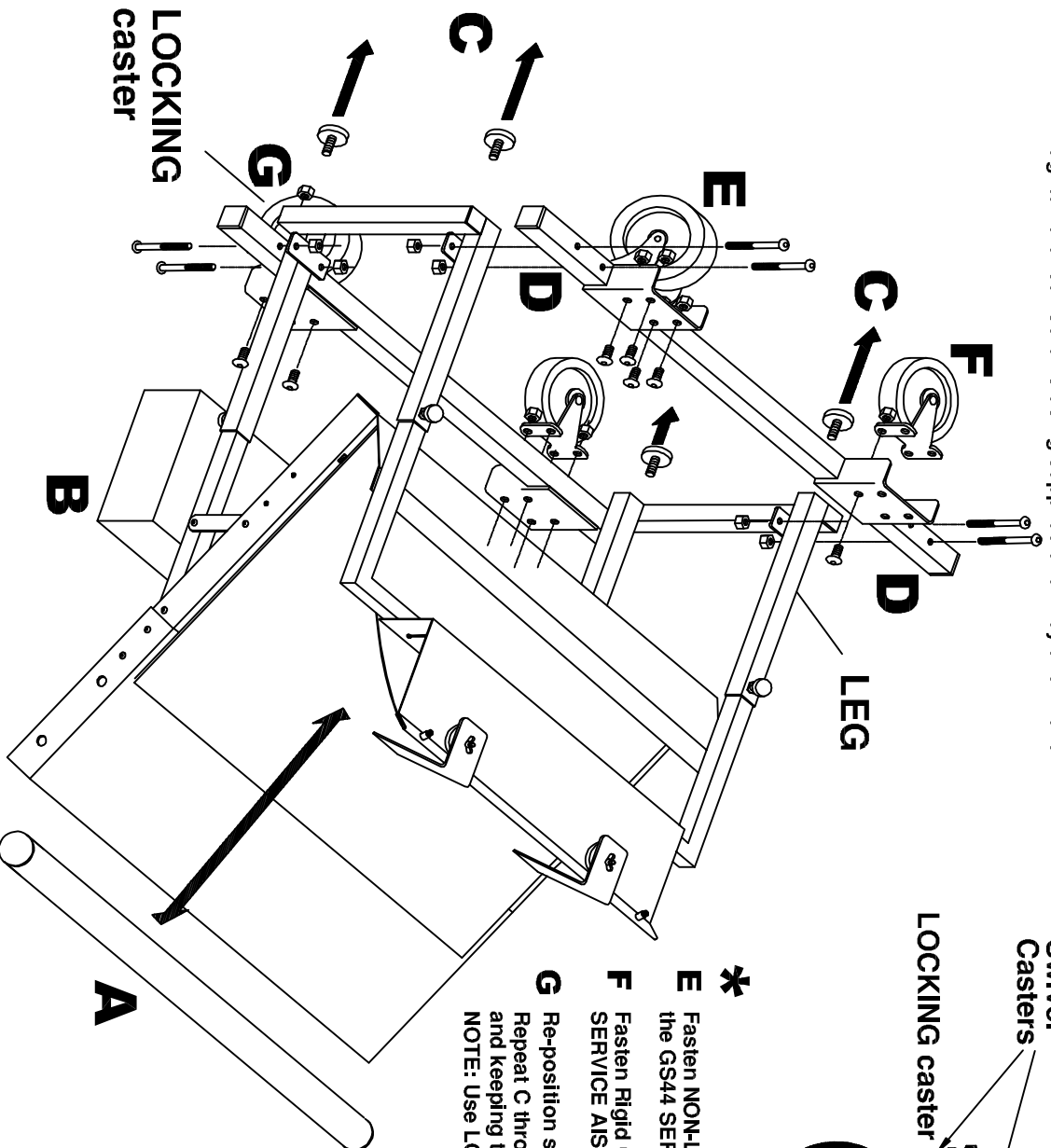


Wheel Kit Assembly for GravityStack 44

* This illustration shows Suggested wheel positions relative to Aisle location.

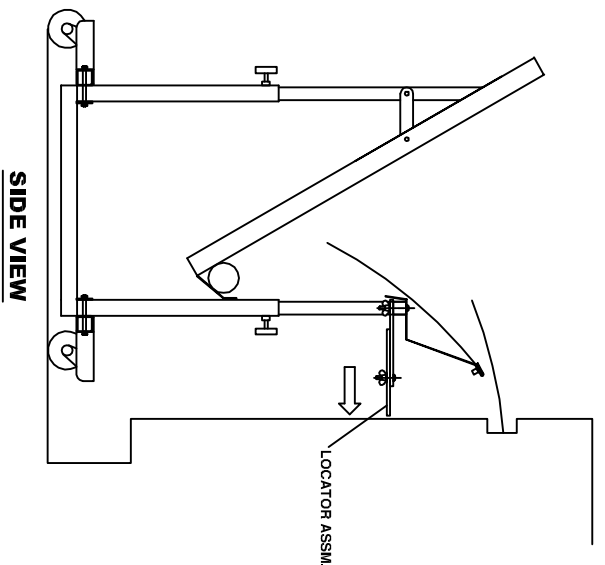
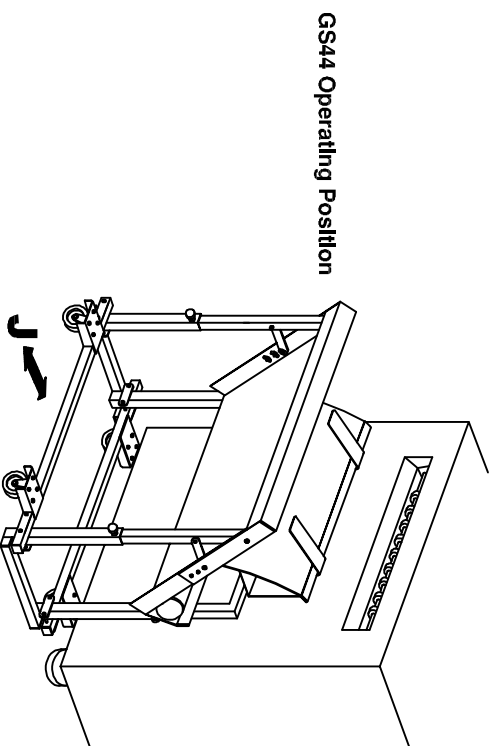
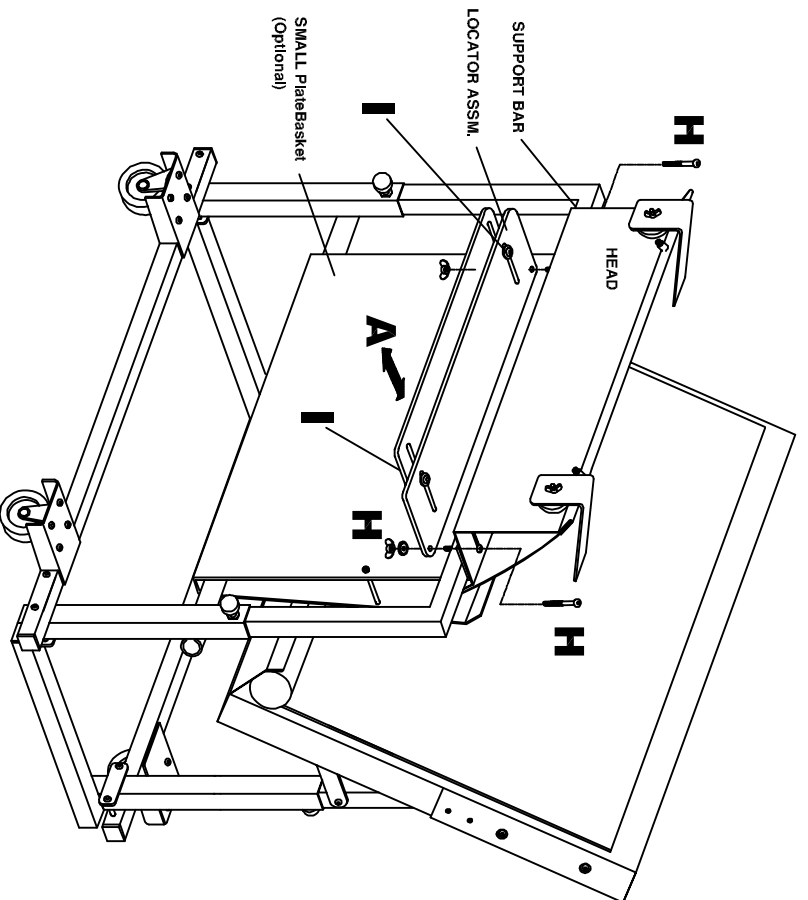
- A** Remove Roller from GravityStack44 (GS44).
- B** As shown, recline GS44 on floor, supporting lower section with empty Wheel Kit shipping carton.
- C** Remove (4) existing Levelers.
- D** Position either of the two Dolly Assemblies over the GS44 Legs, loosely fasten each end of the Dolly Tube to each of the GS44 Legs using 3" Screws & Locking Nuts, with Spanner Plates, as shown. Slide the Assembly as far down toward the GS44 bottom and tighten the four Screws using supplied allen key and wrench.



- * E** Fasten NON-LOCKING Swivel Caster to Caster Bracket (closest to the GS44 SERVICE AISLE) using the (4) 1/2" L. Screws and Lock-Nuts.
- F** Fasten Rigid Caster to Caster Bracket (furthest from the GS44 SERVICE AISLE) using the (4) 1/2" L. Screws and Lock-Nuts.
- G** Re-position stacker to opposite side [NOT ILLUSTRATED]: Repeat C through G on the lower assembly from beneath the legs and keeping the same Caster pattern as the top assembly.
NOTE: Use LOCKING caster on this assembly.

Locator Assembly for GravityStack 44 Wheel Kit

- 6 H** Replace existing 1-1/2"bolts with supplied 2"bolts, mount Locator Assm. to bottom of Support Bar as shown. (Hint: Replace one at a time.)
- I** Loosen the two adjustment fasteners on the Locator Assm. This will ready the Locator Assm. for positioning in next step.
- 7 J** After properly positioning and adjusting the GS44 so that all plates correctly stack, extend the Locator until it touches the platemaker/processor surface. Tighten the Locator adjustment bolts until firmly tight. The GS44 is now ready to travel and return to this original home position.



630-ISO100A